

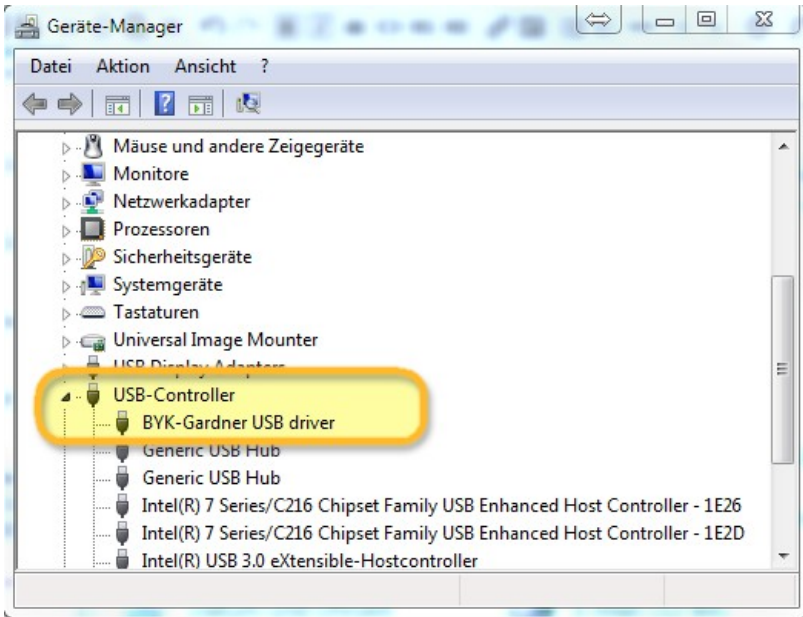
Connection guide ColorDialog Phoenix

Important hints

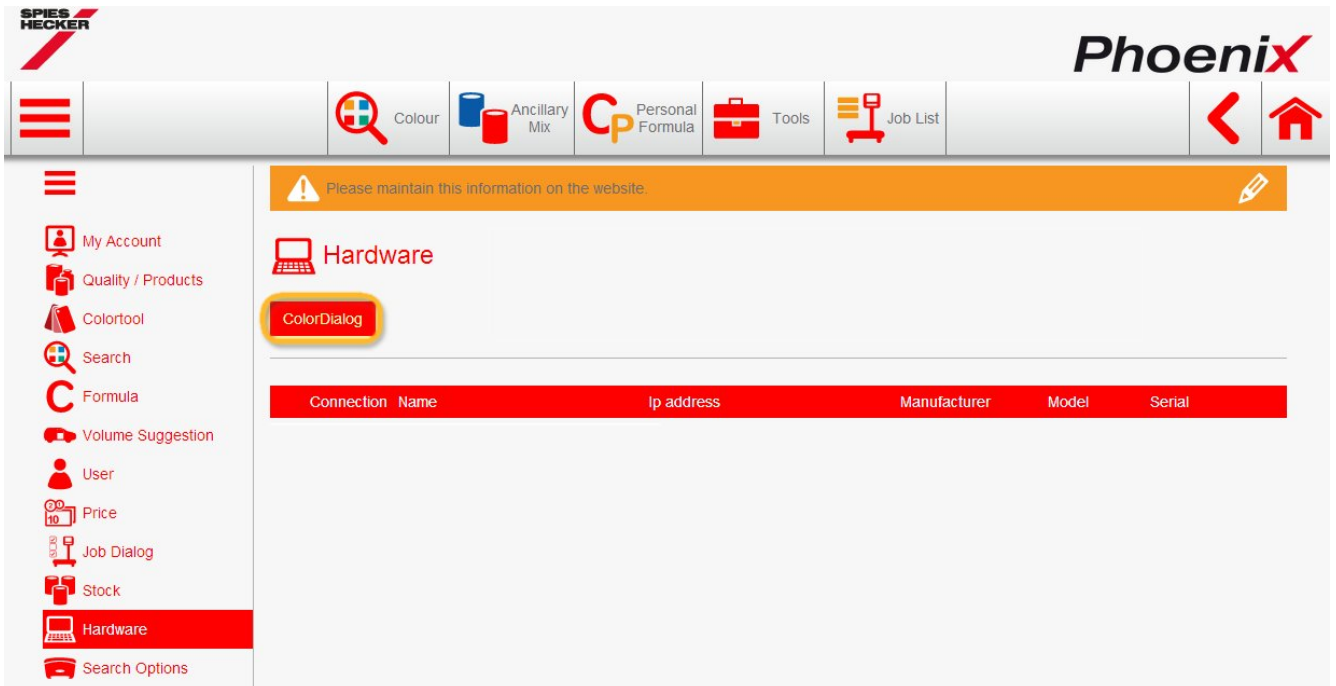
The new ColorDialog Phoenix devices is delivered to you with inactive WiFi connection. The reason for inactivity of WiFi is the required license for using WiFi in different countries. To activate WiFi, please start the locally installed Phoenix™ and follow the description below.

Connection configuration ColorDialog Phoenix to local Phoenix™ using cable.

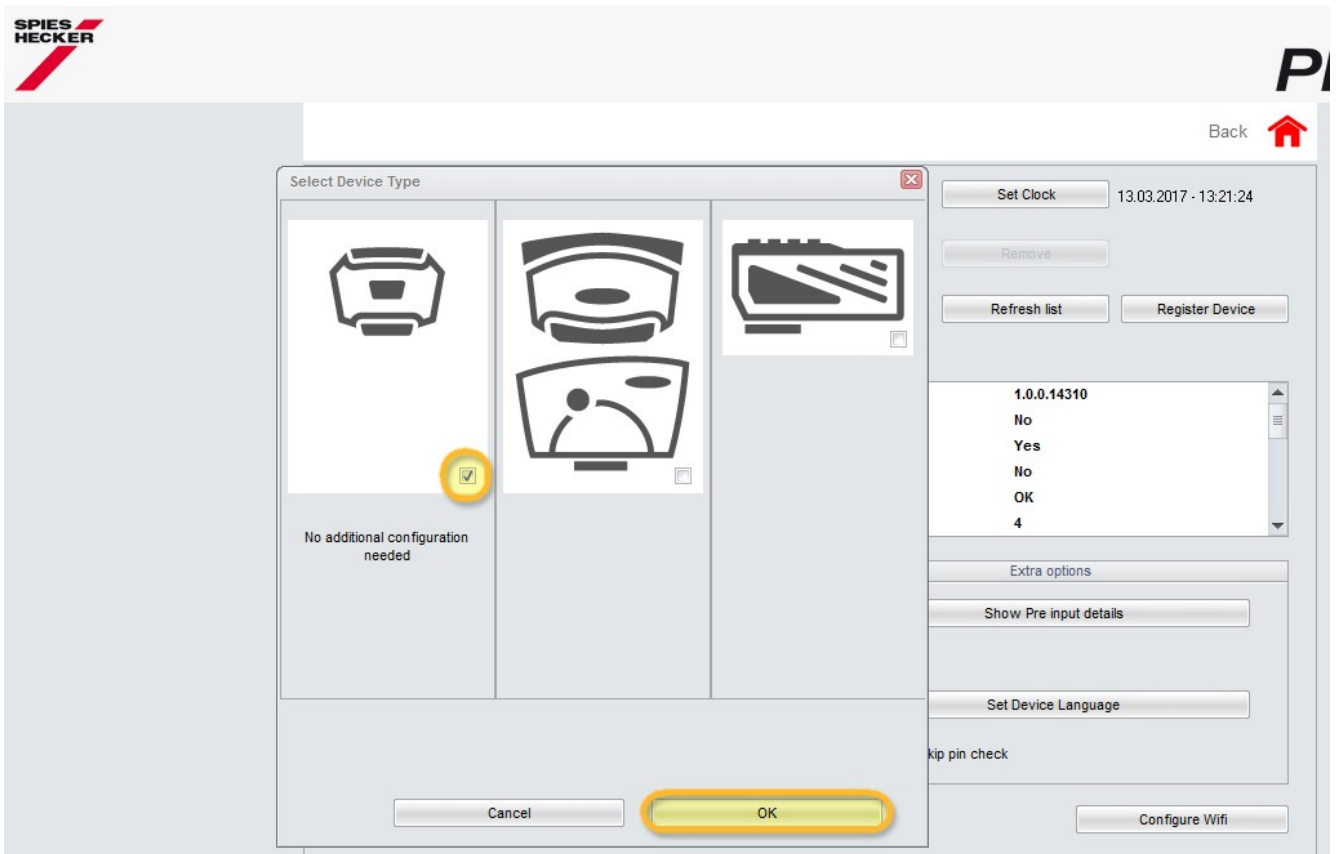
1. Connect the ColorDialog Phoenix to your PC via USB cable or using the docking station.
2. Install the driver and check in the device manager in USB-Controller the "BYK-Gardner USB driver".



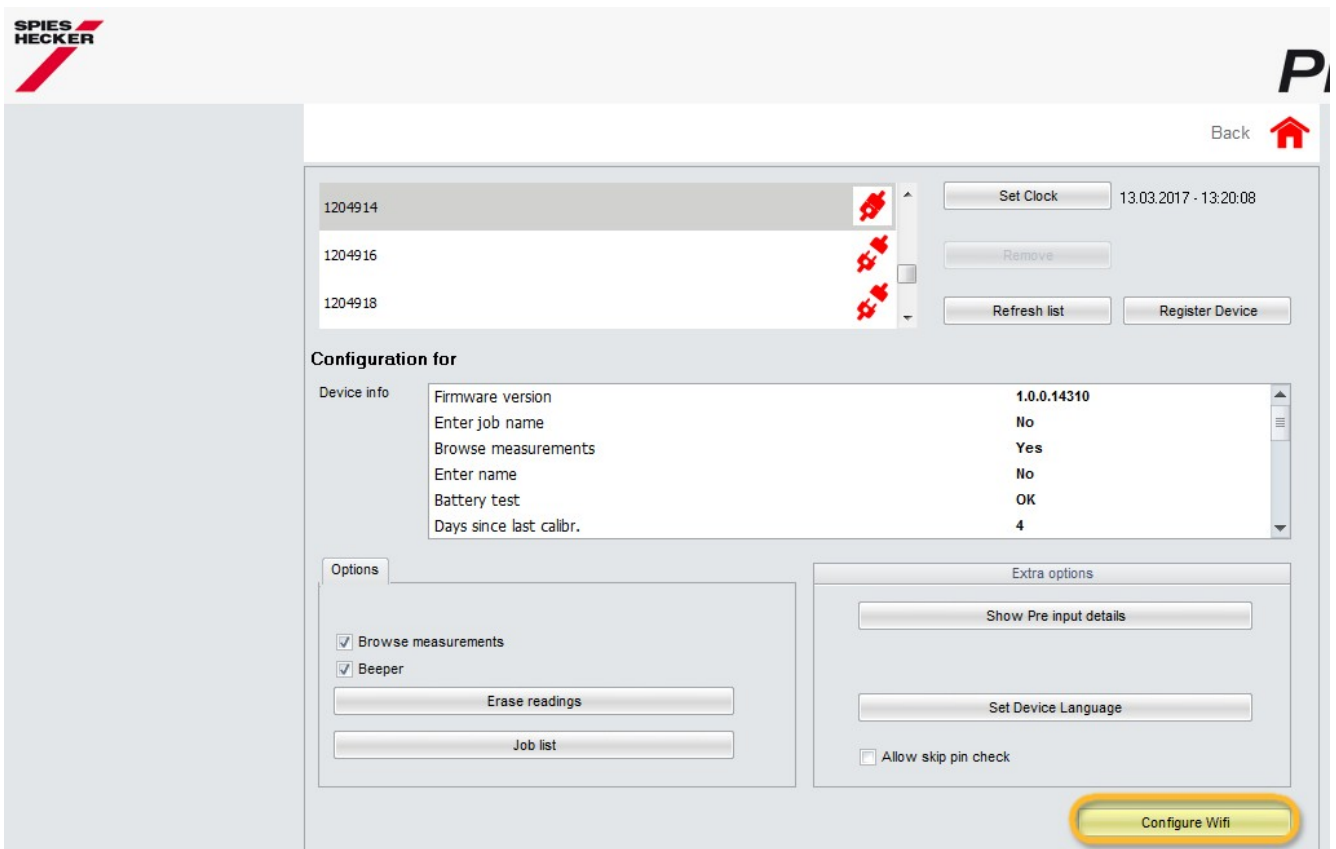
3. Go to "Settings/Hardware" and click the button ColorDialog.



4. Click the button "Register Device", choose the device (left column) and "OK".

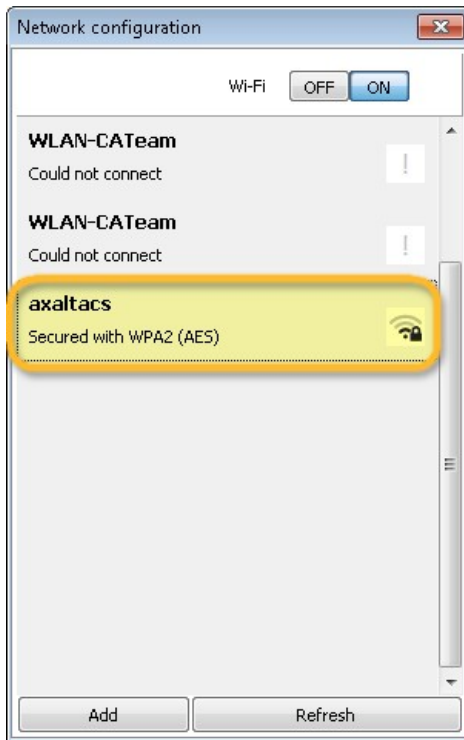


5. The new ColorDialog Phoenix is now connected via cable.
Click now the button "Configure WiFi" to configure the WiFi connection.

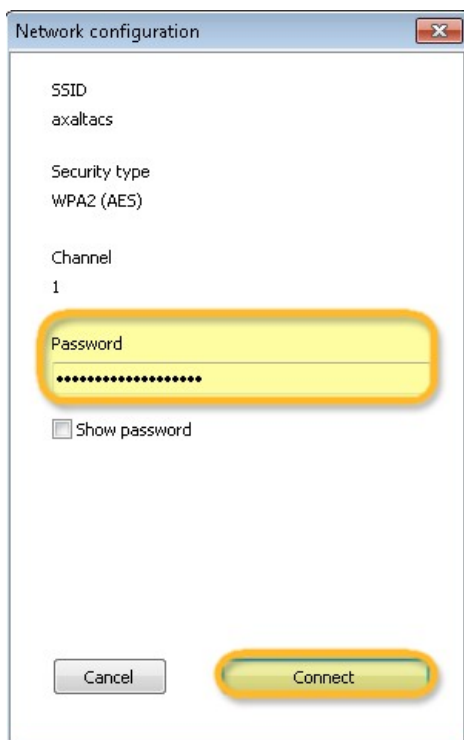


The button "Configure WiFi" is not available if the license for using WiFi doesn't exist for your country.

6. Click the button "ON" to activate WiFi.
7. Double click the SSID of your network.



8. Fill in the network key (Password) and click "Connect".



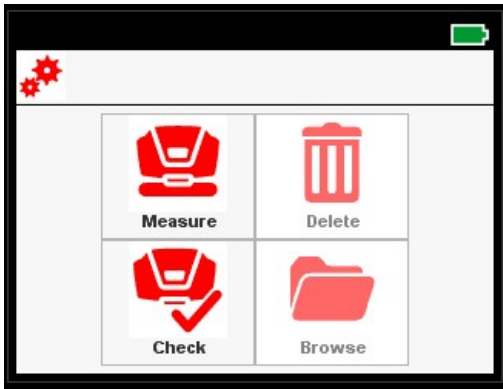
9. Now the ColorDialog Phoenix is connected to your WiFi network.



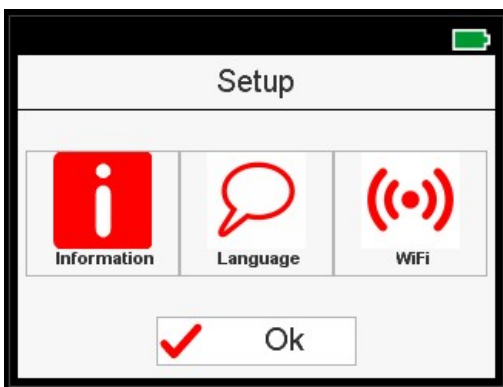
Connection configuration ColorDialog Phoenix to your WiFi.

If the WiFi is active, you can configure the WiFi connection manually on the device itself.

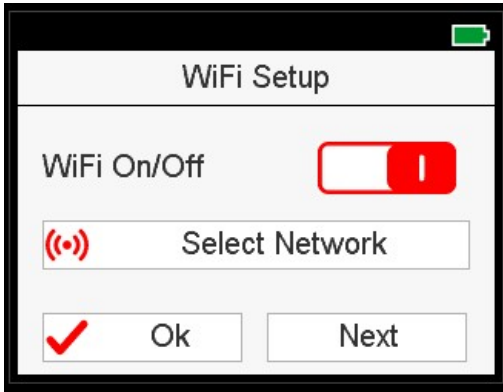
1. Switch on the ColorDialog Phoenix.
2. Click the "Setup" icon (header line).



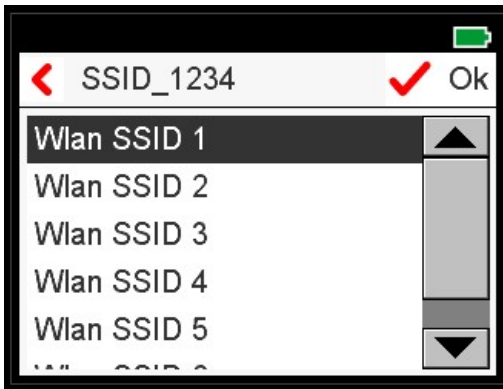
3. Click the icon "WiFi".



4. Click "Select Network".



5. Choose the SSID of your WLAN and click OK.

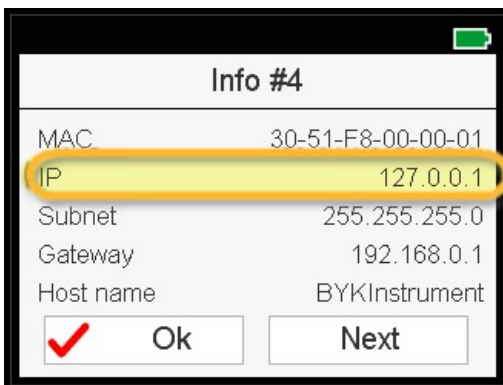


6. Fill in your WiFi access key and click OK.



7. The ColorDialog Phoenix shows a message to confirm the successful connection to WiFi.

8. Click now the icon "Information" and with "Next" browse to the 4th. page and check the ColorDialog Phoenix IP number.



Connection configuration ColorDialog Phoenix to online Phoenix™.

This configuration can be used for connecting to tablets or mobile phones.

1. Start Phoenix™ in a browser and log in to your company account.
2. Go to "Settings/Hardware" and click the "+" sign.
3. Enter the name of your ColorDialog Phoenix (without blanks) and the "IP address" as described in 8 (see above).

Connection	Name	Ip address	Manufacturer	Model	Serial	
	TEST_MINI	10.35.3.125	BYK	7130	1204914	+

4. If the connection was successful the Model and Serial number of the ColorDialog Phoenix will be shown.

Important hints

1. Before you start connection configuration, please check if your ColorDialog Phoenix and the PC/Tablet/Smartphone are in the same WiFi area.
2. Please be patient at transfer of first measurements.

Connection configuration ColorDialog Phoenix to local Phoenix™ using WiFi.

One additional option for configuring the local Phoenix™ with ColorDialog Phoenix without cable.

1. Please follow the procedure in "Connection configuration ColorDialog Phoenix to your WiFi" and the configuration like in online Phoenix™.
2. If the local Phoenix™ is connected to the online Phoenix™, the ColorDialog Phoenix will be visible online, too.